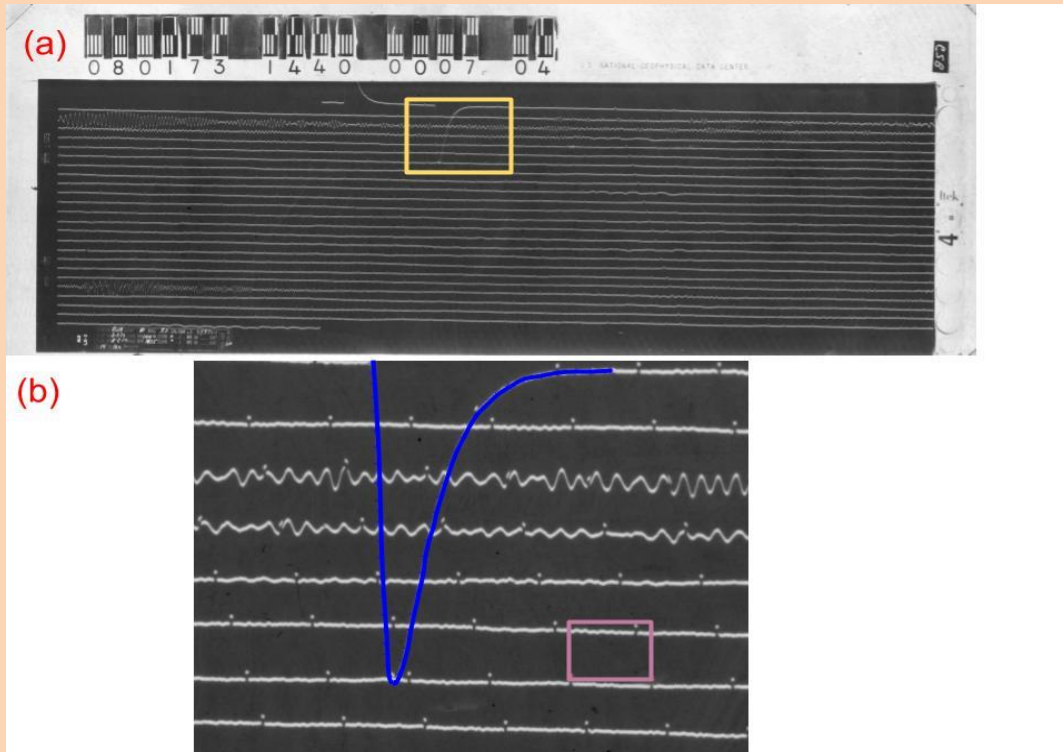


# Calibration Analysis of ALQ

A. T. Ringler  
D. C. Wilson  
E. Wolin  
T. Storm, and  
L. D. Sandoval



# Calibration Pulse at ALQ



Standard WWSSN site

Looking at the LPZ component

Can we recover the response of the system?

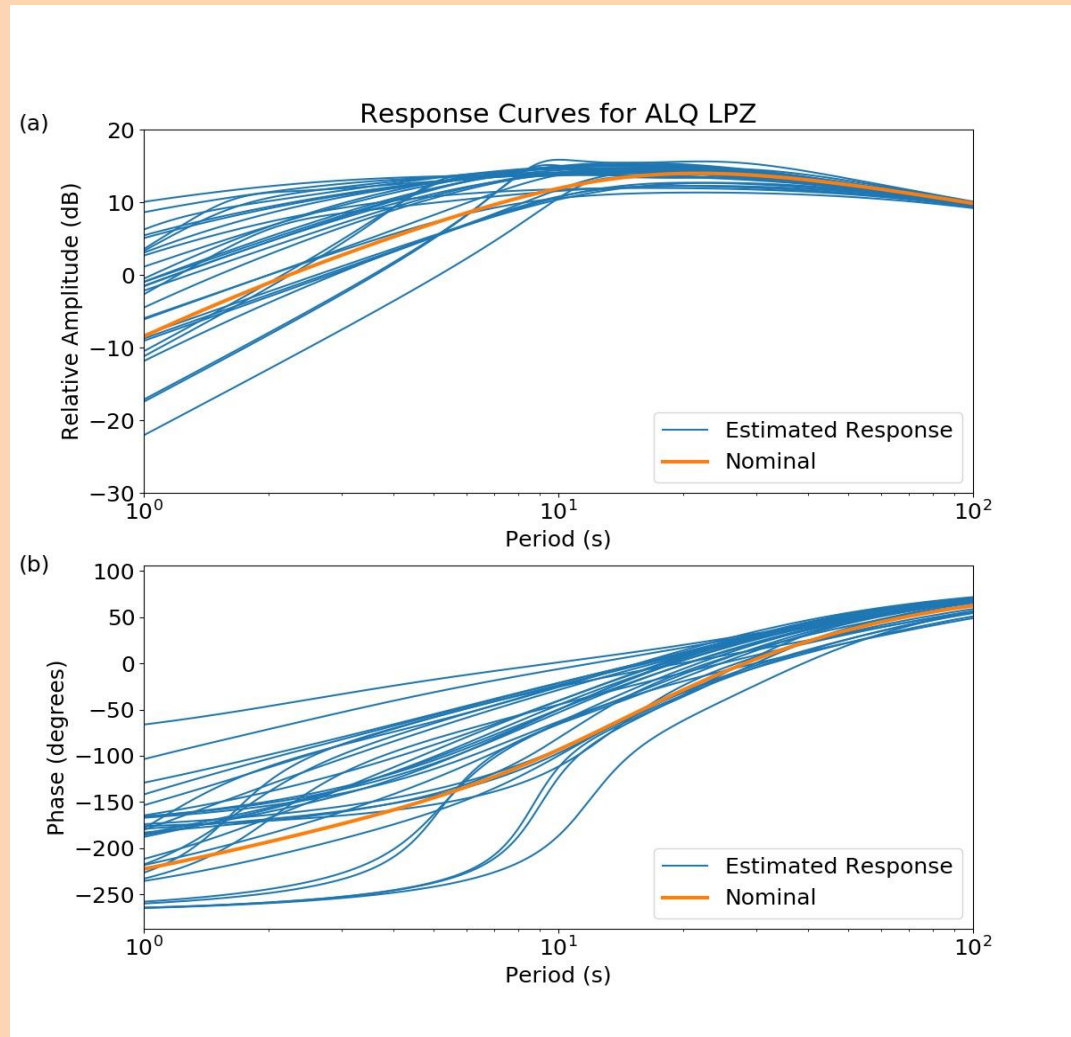
Can we use it to get ground motion?

What are the limitations in this system?

# Response Curve at ALQ

We can recover response curves and poles/zeros using the calibration pulses 10% or better in amplitude

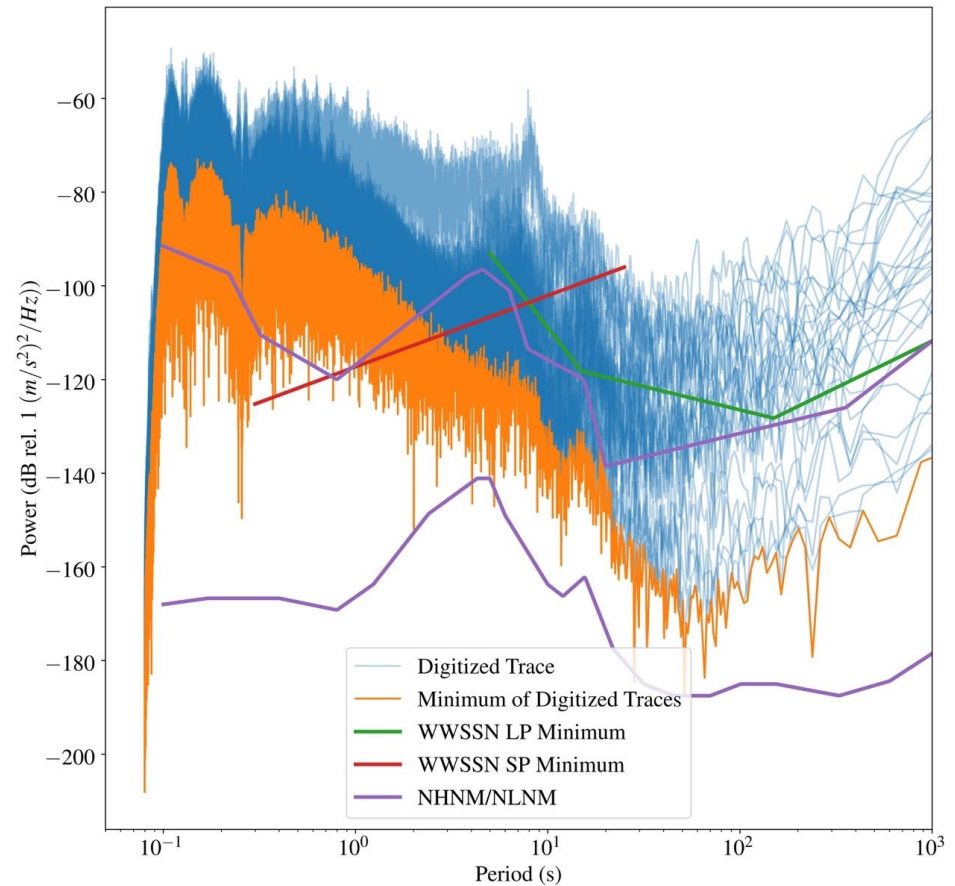
They vary widely, similar to Ekström and Nettles (1997).



# Background Noise

Noise levels are potentially better than estimated by Peterson and Hutt (1989).

High-frequency noise is from the system and not the digitization process



# What We Have Scanned

Roughly 5% of the archive is scanned and the DMC has the scans

We are trying to get NARA to take the rest of the film chips

